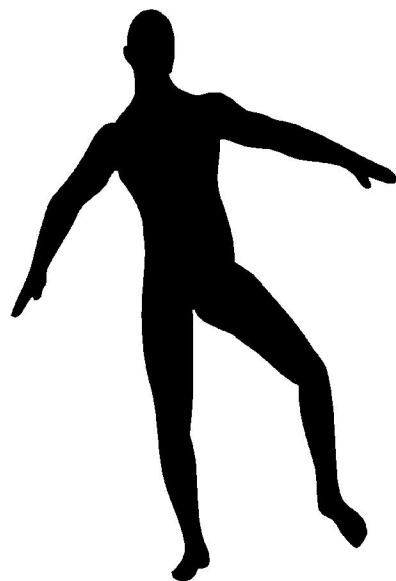


2009 Course Dates & Locations

# Treating Balance Impairment in the Neurological Population

Click here for the most current Course Dates



Call 1-800-300-5512 or Go online to: [www.healthclick.com/courses/nas30.cfm](http://www.healthclick.com/courses/nas30.cfm) for hotel and course location information. Future course dates & information are added weekly!

Call if your facility is interested in sponsoring this course, or if you are an instructor interested in presenting courses with North American Seminars.

Presented by  
Linda Horn, PT, DScPT, MHS, NCS

North American Seminars, Inc.  
1-800-300-5512  
Fax 1-800-310-5920  
[www.healthclick.com](http://www.healthclick.com)

## Day One

- 7:30 8:00 Registration and Continental Breakfast
- 8:00 9:00 Concepts of Balance and Postural Control
- Systems theory
  - Motor control/motor learning
  - Current concepts
- 9:00 10:30 Evaluating Balance in Patients with Neurological Disorders
- History
  - Objective: Strength, tone, ROM, and sensation, coordination
- 10:30 10:45 Break
- 10:45 12:00 Evaluation (continued)
- Functional mobility including gait
  - Oculomotor exam
- 12:00 12:45 Lunch (on your own)
- 12:45 3:00 Outcome Measures
- Fugl-Meyer, Barthel
  - Berg Balance Scale
  - Tinetti
  - Functional Reach
  - Timed Up and Go
  - Dynamic Gait Index and other tests
  - Demonstration of selected measures
- 3:30 3:15 Break
- 3:15 5:30 Treating Balance Deficits: General Treatment Ideas
- 5:30 6:00 Group Case Study

## Day Two

- 8:00 9:30 Interaction of Comorbidities
- Diabetes
  - Orthostatic Hypotension
  - Vestibular disorders
  - Osteoporosis
  - Peripheral neuropathy
  - Cardiopulmonary disorders
  - Vision disorders
- 9:30 10:30 Balance Treatment Lab
- Selected outcome measures
  - Selected techniques practiced
- 10:30 10:45 Break
- 10:45 12:00 Stroke
- Evaluation and Treatment
  - Outcome measures
  - Research
  - Case study
- 12:00 12:30 Lunch (on your own)
- 12:30 1:45 Parkinson's Disease
- Evaluation and treatment
  - Outcome measures
  - Research
  - Case study
- 1:45 2:30 Multiple Sclerosis
- Evaluation and treatment
  - Outcome measures
  - Research
  - Case study
- 2:30 3:00 Head Trauma
- Evaluation and treatment
  - Outcome measures
  - Research
  - Case study
- 3:00 3:30 Putting It All Together: Group Case Studies

## About the Educator

**Linda B. Horn, PT, DSc, MHS, NCS** is the Research and Regulatory Compliance Coordinator at St. Agnes Hospital in Baltimore, Maryland. She has over 24 years of clinical experience in a variety of clinical settings including acute care, outpatient and home care. She became a Neurologic Certified Specialist by the American Physical Therapy Association in 1993 and re-certified in 2003. Her primary area of expertise is in the area of balance and vestibular disorders in the adult population, particularly with the geriatric population. She has presented numerous continuing education seminars and poster presentations on these topics. Linda is also an adjunct instructor at the University of Maryland Baltimore, where she graduated in 1984. She received a Master of Health Science from the University of Indianapolis in 2003 and a Doctor of Science from the University of Maryland Baltimore in 2007. She is active in the APTA on the Practice Committee for the Neurology Section and serves as the Federal Affairs Liaison for the section. She currently is the Director of Education for the APTA of Maryland.

Certificates of attendance are provided upon successful completion of the course. This course is 15.0 contact hours/1.5 CEUs.

BOC Provider #P2047.  
FL OT provider #50-1442.  
IL PT Provider # 216000074.  
AOTA provider #4487.

NAS course presented in MD are submitted to the PT and OT Boards for CEU approval. This course can be used for continuing education competency for license renewal for OT's and PT's in the state of California. This course will be submitted to the Nevada Board of Physical Therapy Examiners for ceu approval for physical therapists. NAS is approved by the IDPR to provide continuing education for physical therapists licensed in the state of Illinois. NAS courses presented in Florida are approved by the FPTA for physical therapists. The Illinois, Kentucky, Texas, Oregon, Tennessee, New Hampshire, Nevada, South Carolina, Delaware, Rhode Island, Missouri and Ohio occupational therapy regulatory boards accept courses presented by AOTA providers to meet the needs of OT continuing educational requirements. North American Seminars, Inc. is an AOTA provider for continuing education. AOTA does not endorse specific course content, products, or clinical procedures.

## Why You Should Attend This Course

This two-day interactive course is designed to improve the skills of the clinician treating neurologically involved patients presenting with balance problems. This course integrates balance disorder research findings into the examination and treatment of individuals with neurological deficits. In-depth discussion of stroke, Parkinson's Disease, head trauma and multiple sclerosis are covered to assist the clinician in developing a thorough understanding of the interrelationship of preexisting neurological impairments and balance disorders. The balance treatment lab will allow participants the opportunity to practice many of the techniques discussed in this course.

This course will cover: concepts of balance, postural control and motor learning, a systematic approach to evaluating balance in patients with neurological disorders, outcome measures, case study presentations, recent research correlations between balance disorders and the neurologically impaired and treatment development for increasing functional abilities. Therapists are presented with the tools necessary to apply the information immediately in the clinical setting and to develop a comprehensive evaluation process and treatment programs for increasing functional outcomes.

This course is offered to physical therapists, physical therapy assistants, occupational therapists and occupational therapy assistants.

## Course Objectives

Upon completion of this course participants will be able to:

- Apply current concepts of motor learning, balance and postural control with neurological diseases such as: stroke, Parkinson's Disease, head trauma, and multiple sclerosis.
- Understand the relationship between comorbidities and specific neurological diseases.
- Develop a thorough evaluation process to determine the functional impact of the underlying neurological deficits with balance disorders.
- Utilize appropriate outcome measures while incorporating treatment techniques supported by research into treatment plans for patients with specific neurological diseases.
- Incorporate examination of comorbidities with neurological examination.
- Incorporate treatment techniques to reduce the effects of comorbid impairments with the treatment of neurological impairments.
- Develop a balance training program to optimize motor learning for patients with underlying neurological disorders.



**APPROVED PROVIDER of  
CONTINUING EDUCATION**  
by The American Occupational  
Therapy Association, Inc.



Horn 09

## Treating Balance Impairment

**Registration Fee: \$399.00**

Send tuition to: North American Seminars, Inc.  
2000 Mallory Lane Suite 130-67 Franklin, TN 37067  
1-800-300-5512 Fax 1-800-310-5920 [www.healthclick.com](http://www.healthclick.com)

Name \_\_\_\_\_ Profession \_\_\_\_\_  
 Home  Business Address \_\_\_\_\_  
 City \_\_\_\_\_ State \_\_\_\_\_ Zip \_\_\_\_\_  
 Phone \_\_\_\_\_ Fax \_\_\_\_\_  
 Credit Card \_\_\_\_\_ e-mail \_\_\_\_\_  
 expiration date \_\_\_\_\_  
 Location of attendance \_\_\_\_\_

All cancellations must be submitted with written notice and received 14 days prior to the course date. Refunds and transfers minus the deposit fee of \$75.00 are provided until 14 business days prior to the course date. No refunds or transfers will be issued if notice is received after 14 days prior to the course date. North American Seminars, Inc. reserves the right to cancel any course and will not be responsible for any charges incurred by the registrant due to cancellation. A full course tuition refund will be issued if NAS cancels the course. NAS reserves the right to change a course date, location or instructor. No refund will be issued if course is in progress and is interrupted by an Act of War or God or issue beyond our control. NAS, Inc. will not be responsible for any participant expenses other than a course tuition refund for course cancellations.